

Money, Mojo and Votes

Political Reform and Election Reality in Philadelphia

John Kromer, Julie Proulx, Andy Denison

March, 2012

Maps | Figures | Photos | Illustrations

Figure 1 Philadelphia Wards

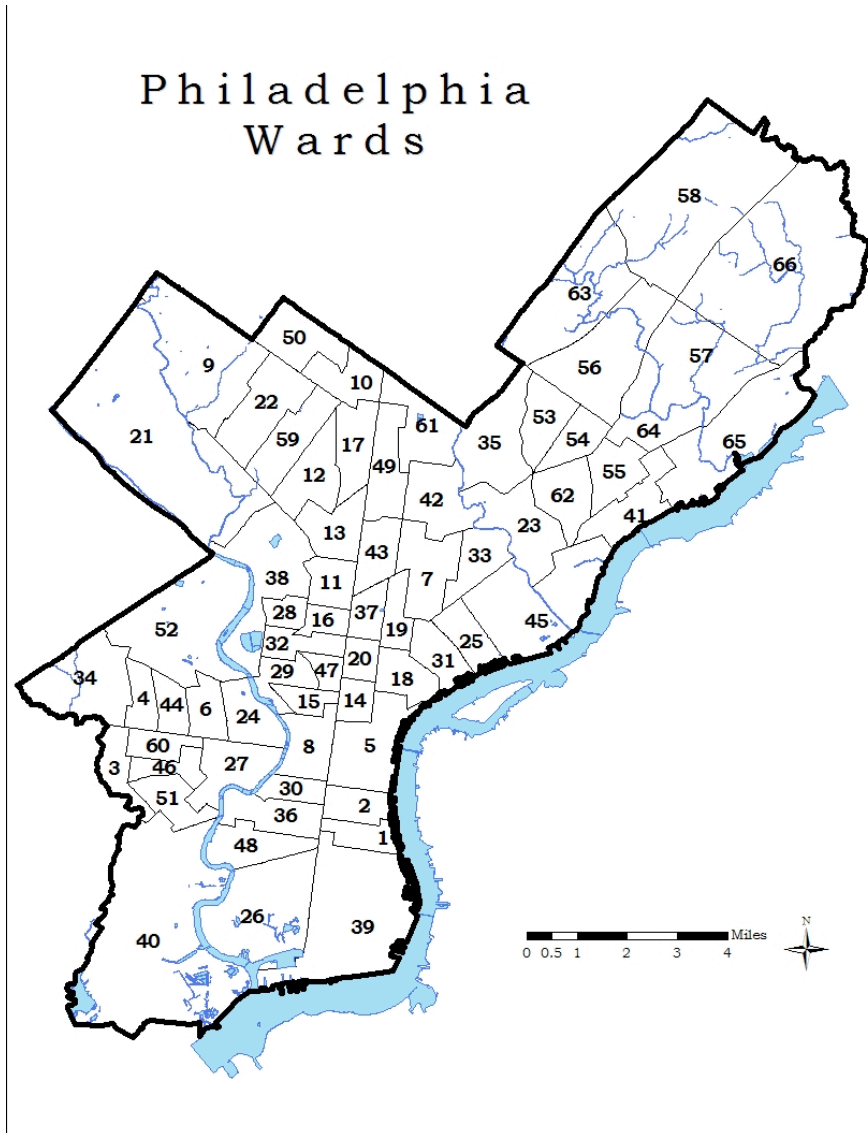


Figure 2 Sample ballot by advocacy group

RECOMMENDED CANDIDATE FOR MUNICIPAL PRIMARY ELECTION
TUESDAY MAY 17, 2011

OFFICES	DEMOCRATIC	DEMOCRATIC	DEMOCRATIC	DEMOCRATIC	DEMOCRATIC	DEMOCRATIC
JUDGE OF THE COURT OF COMMON PLEAS (VOTE FOR NOT MORE THAN TWO)	SEAN KENNEDY 21ST WARD 114	DAINE GREY JR 61ST WARD 118	JOSEPH J ONEILL 21ST WARD 116	J SCOTT OKLEFE 34TH WARD 122	CHARLES EHRLICH 8TH WARD 128	MEREDITH SEGLE DICLAUDIO 9TH WARD 134
	DIANA ANHALT 9TH WARD 185	CHRISTOPHER MALLIOS JR 5TH WARD 111	JIM DYERGRILIS 8TH WARD 117	DREW ALDINGER 9TH WARD 123	NYCOLE WATSON 34TH WARD 129	STEPHEN J NEGRO 41ST WARD 135
	JONATHAN Q IRVINE 9TH WARD 186	BARBARA A MCDELMOTT 21ST WARD 112	STEPHANIE M SAWYER 21ST WARD 118	TED J VIGILANTE 23RD WARD 124	GIOWANNI O CAMPBELL 8TH WARD 130	JOSEPH C WATERS JR 5TH WARD 138
	VINCENT L JOHNSON 26TH WARD 187	HARRY J LEVANT 21ST WARD 113	VINCE GRUSINI 21ST WARD 119	ROGER F GORDON JR 21ST WARD 125	LEON A KING II 9TH WARD 131	BEVERLY MULGROW 56TH WARD 137
	ANGELO J FOULIETTA 2ND WARD 189	ANNE MARIE B COYLE 65TH WARD 114	CAROLYN H NICHOLS 3RD WARD 120	KENNETH CITRINO 63RD WARD 126	KENNETH J POWELL JR 9TH WARD 132	SAYDE J LADOV 5TH WARD 138
	ROBERT M KLINE 5TH WARD 189	MARIA MCLAUGHLIN 21ST WARD 115	MICHAEL FANNING 86TH WARD 121	EDWARD C WRIGHT 32ND WARD 127	MARTIN S COLEMAN 8TH WARD 133	LOPEZ T THOMPSON 86TH WARD 139
JUDGE OF THE MUNICIPAL COURT (VOTE FOR 1)	MARVIN L WILLIAMS 26TH WARD 142	ANITA SMITH 16TH WARD 145	NYCOLE WATSON 34TH WARD 148	PROPOSED CHARTER CHANGE QUESTION (Bill No. 110060) "Shall The Philadelphia Home Rule Charter be amended to provide for the creation, appointment, powers and duties of an independent Jobs Commission which would determine how City government and other public, quasi-public and non-profit agencies can best work together to create and preserve private sector jobs for Philadelphians, and issue a written report containing its findings?" <div>YES</div>		
	DESRICK W COKER 40TH WARD 143	KENNETH J POWELL 9TH WARD 146	MEREDITH SEGLE DICLAUDIO 9TH WARD 149			
	MARTIN S COLEMAN 8TH WARD 144	VINCENT L JOHNSON 26TH WARD 147	KENNETH CITRINO 63RD WARD 150			
MAYOR (VOTE FOR 1)	T WILTON STREET 62ND WARD 153			<div>ON MAY 17TH PLEASE SUPPORT CANDIDATES APPROVED BY PHILADELPHIA'S CIVIL RIGHTS LEADERSHIP!</div>		
	MICHAEL A NUTTER 52ND WARD 154					
CITY COMMISSIONERS (VOTE FOR NOT MORE THAN 12)	WARREN BLOOM 6TH WARD 165	BLAIR TALMADGE 30TH WARD 168	ANTHONY CLARK 26TH WARD 170			
	MICHAEL EDWARD BELL 36TH WARD 166	STEPHANIE SINGER 8TH WARD 169	MARGARET M TARTAGLIONE 62ND WARD 169			
	JYVY STATEN 17TH WARD 167					
SHERIFF (VOTE FOR 1)	JOHN KROMER 22ND WARD 173					
	JACQUE WWAUMBUISH 21TH WARD 174					
	JEWELL WILLIAMS 16TH WARD 175					
COUNCIL AT LARGE (VOTE FOR NOT MORE THAN 3)	WILLIAM K GREENLEE 15TH WARD 176	LAWRENCE P CLARK 61ST WARD 181	JAMES F KENNEY 5TH WARD 186			
	ISAIAH THOMAS 16TH WARD 177	HUMBERTO PEREZ 37TH WARD 182	ANDREW TOY 8TH WARD 187			
	MICHAEL JONES 52ND WARD 178	JANIS E MANSON 36TH WARD 183	EDWARD J NESMITH 56TH WARD 188			
	BLONDELL REYNOLDS BROWN 52ND WARD 179	BILL GREEN 9TH WARD 184	W WILSON GOODE JR 52ND WARD 189			
	SHERRIE COHEN 17TH WARD 180	RALPH P BLAKNEY 21ST WARD 185				

Figure 3 Wards with highest and lowest voter turnout in the 2008 Democratic Presidential Primary

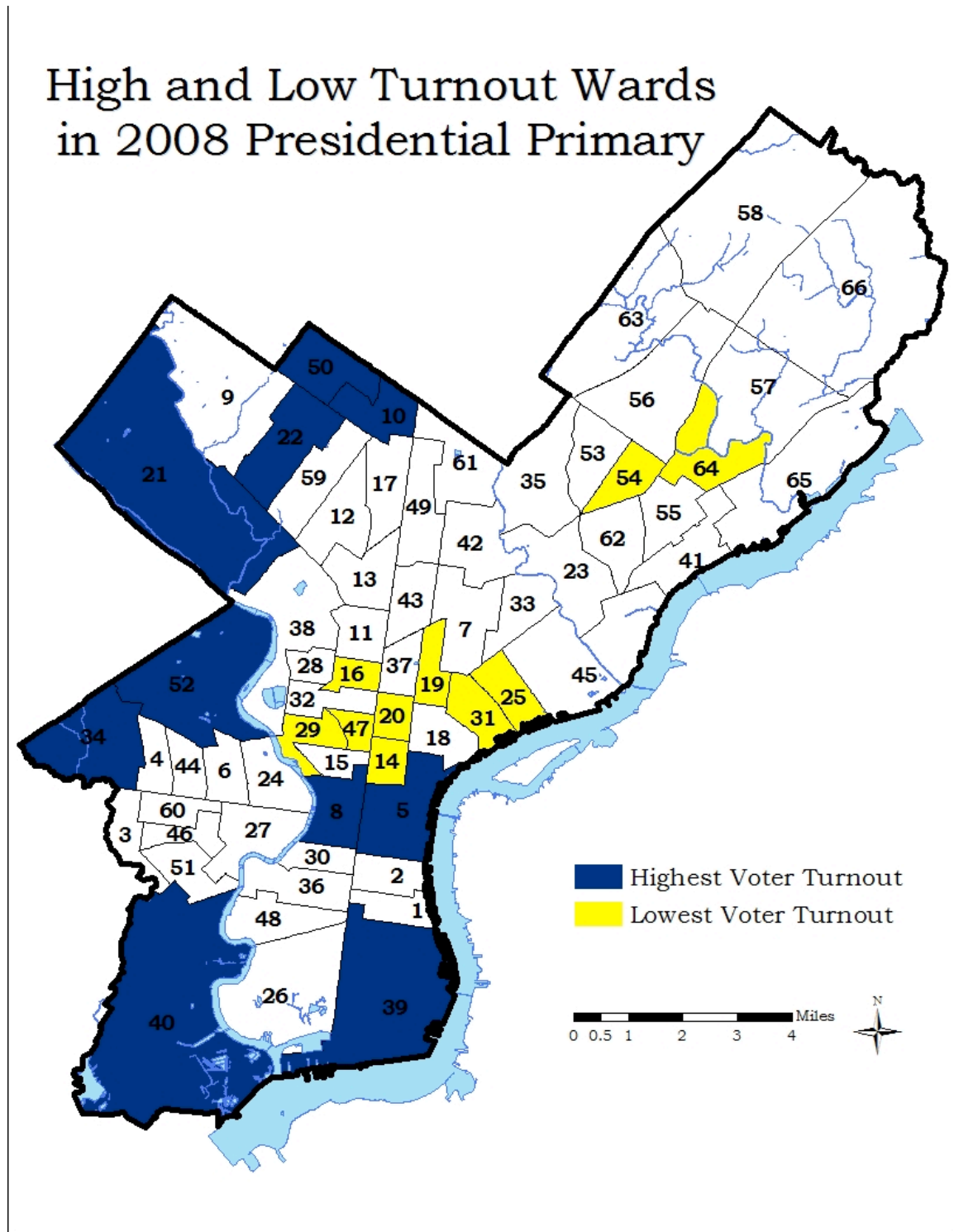


Figure 4 Wards with highest voter turnout in 2001 Democratic Primary for City Commissioner

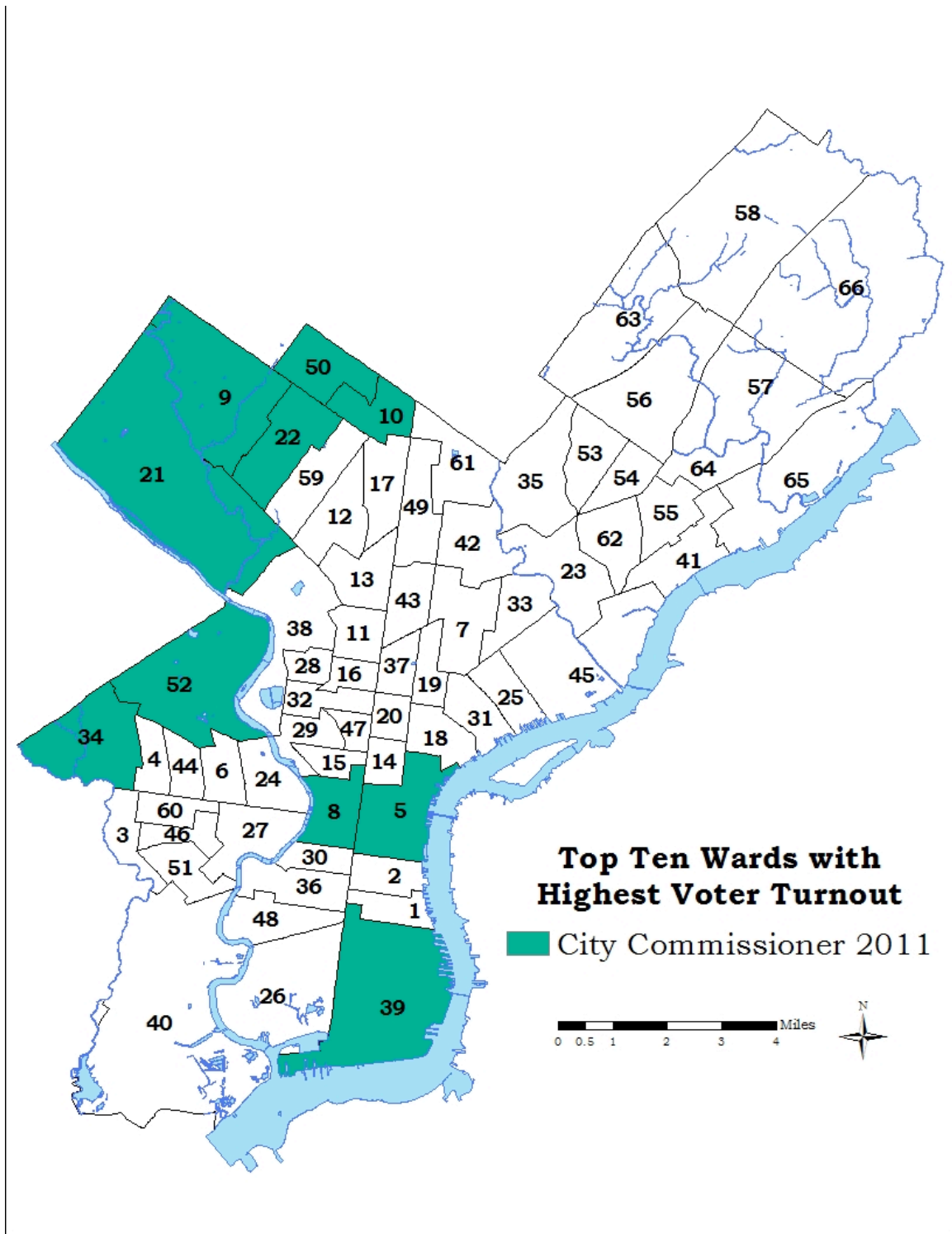


Figure 5 Wards with highest voter turnout in 2011 Democratic Primary for Sheriff

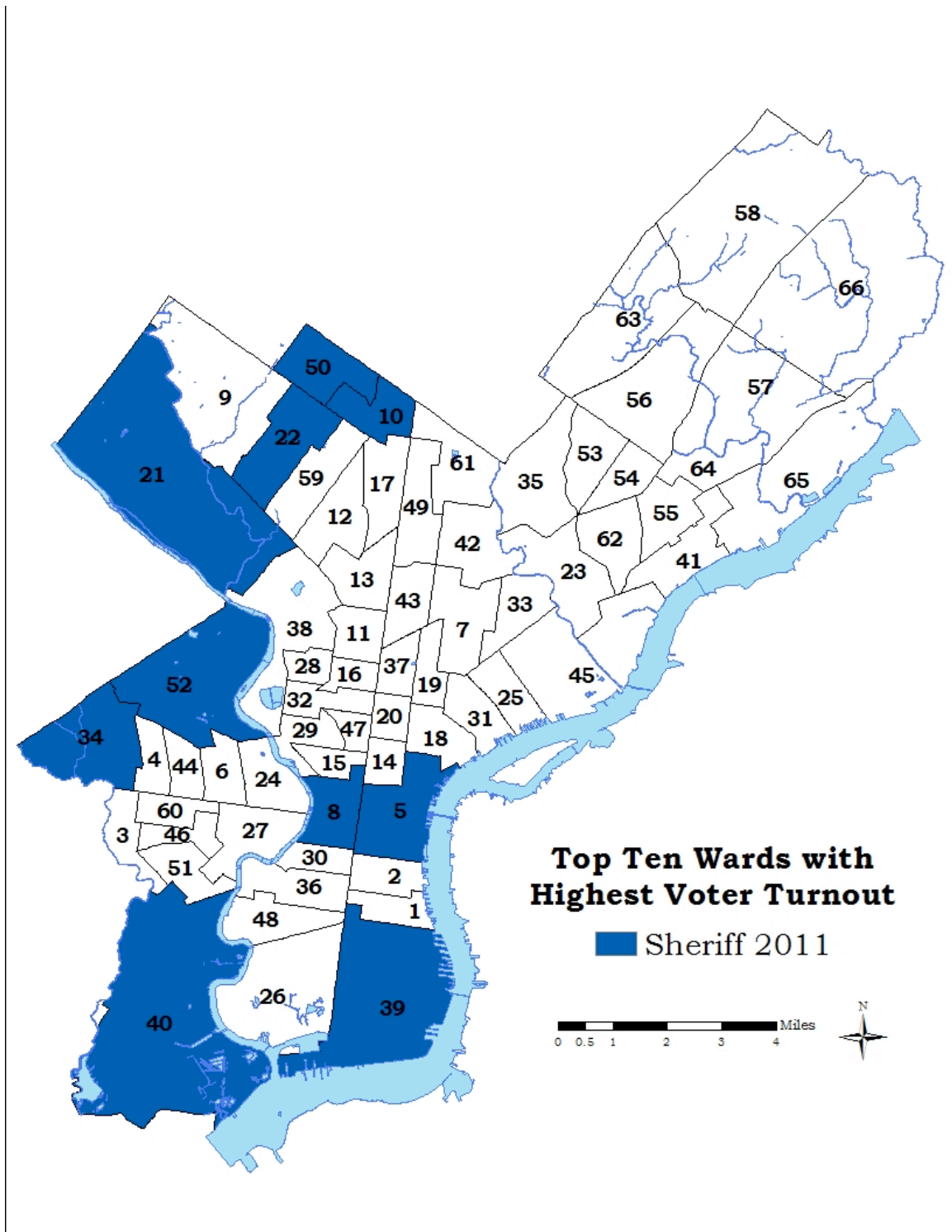


Figure 6 Wards with highest voter turnout in 2009 Democratic Primary for City Controller

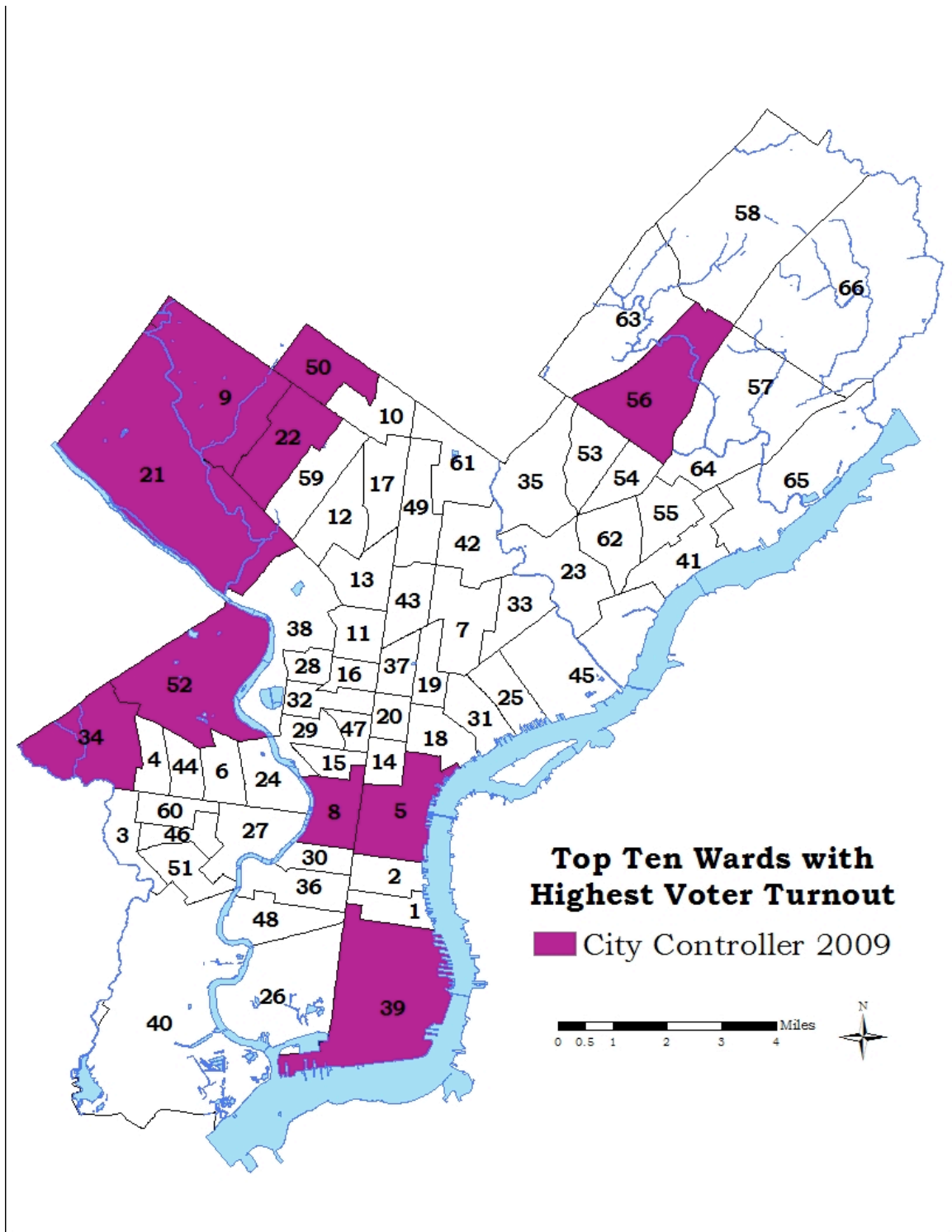


Figure 7 2nd Ward in South Philadelphia

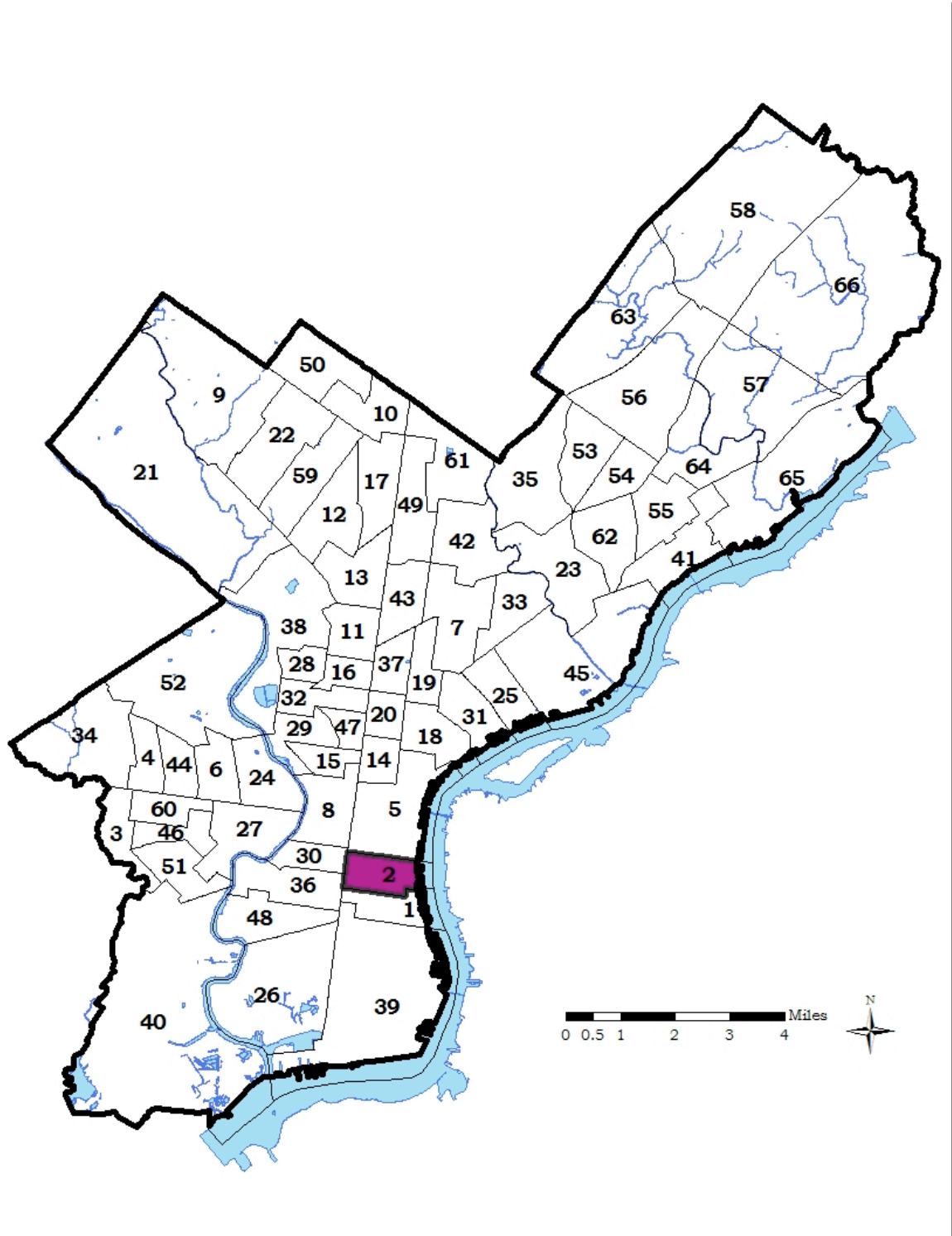


Figure 8 2nd Ward with division boundaries

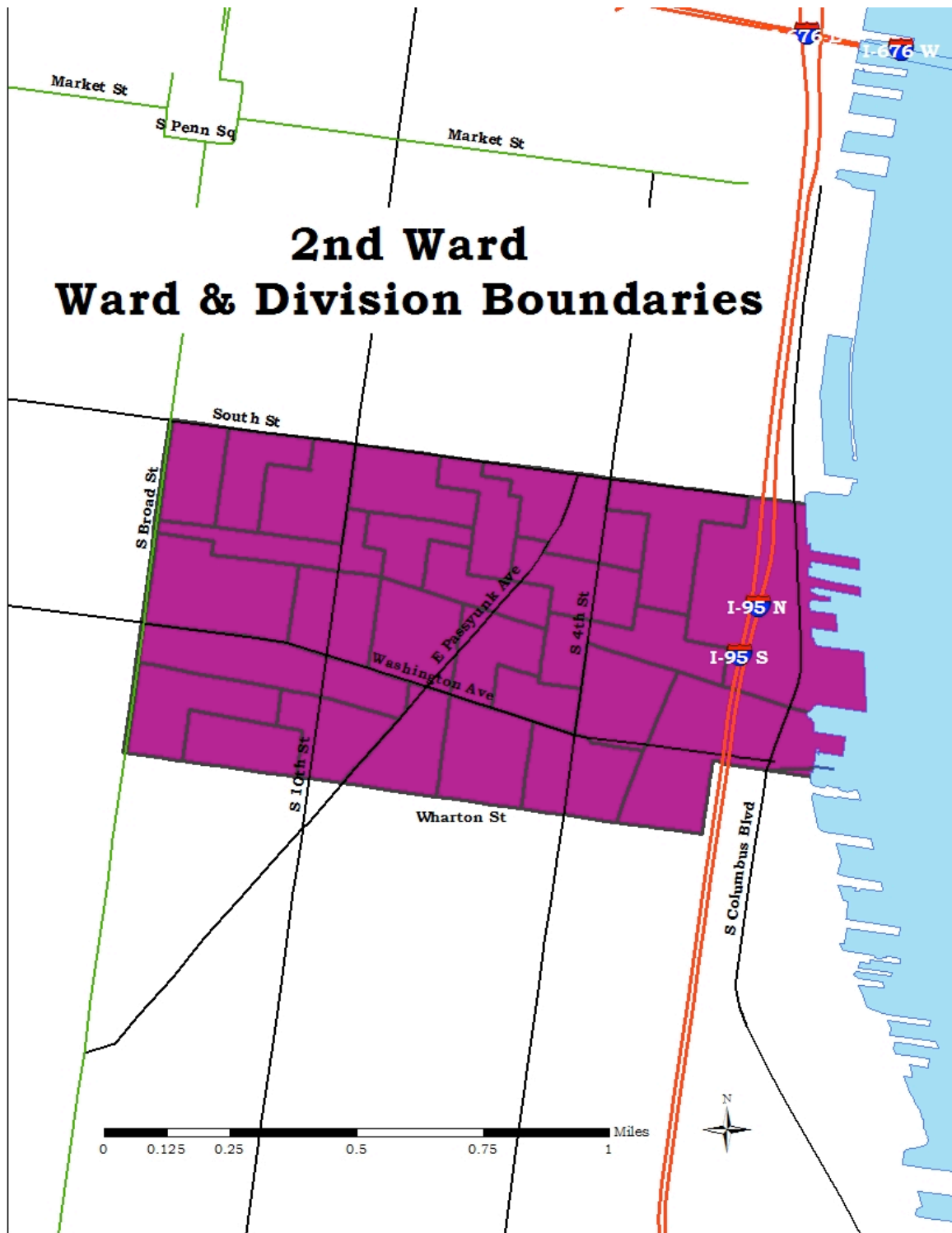


Figure 9 Stephanie Singer: Candidate for Philadelphia City Commissioner



Photo Credit: votesinger2011.com

Figure 10 Margaret "Marge" Tartaglione: Candidate for Philadelphia City Commissioner



Photo Credit: phillyrecord.com

Figure 11 Singer vote margins over Tartaglione and Clark, by ward

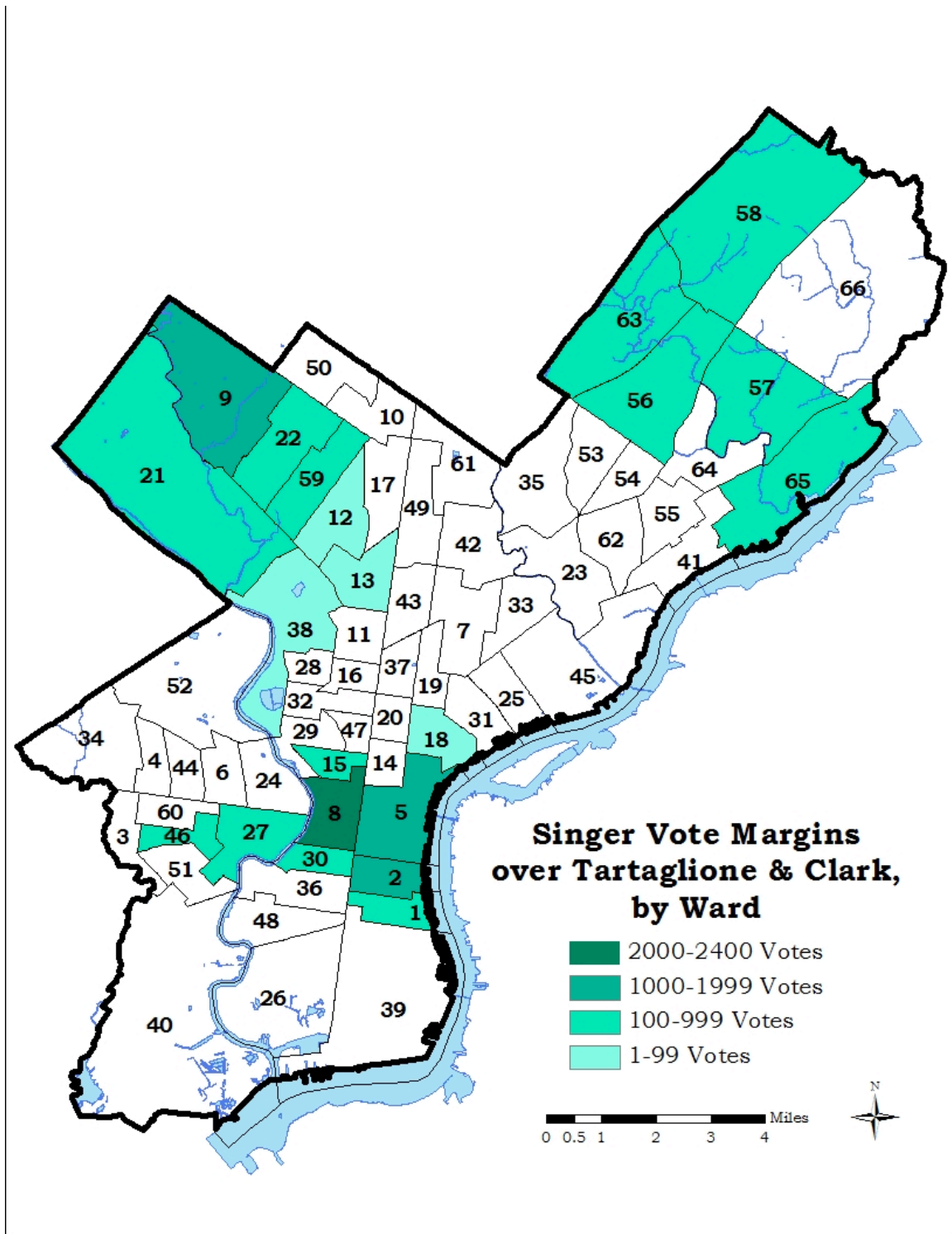


Figure 12 Singer division vote margins against all candidates

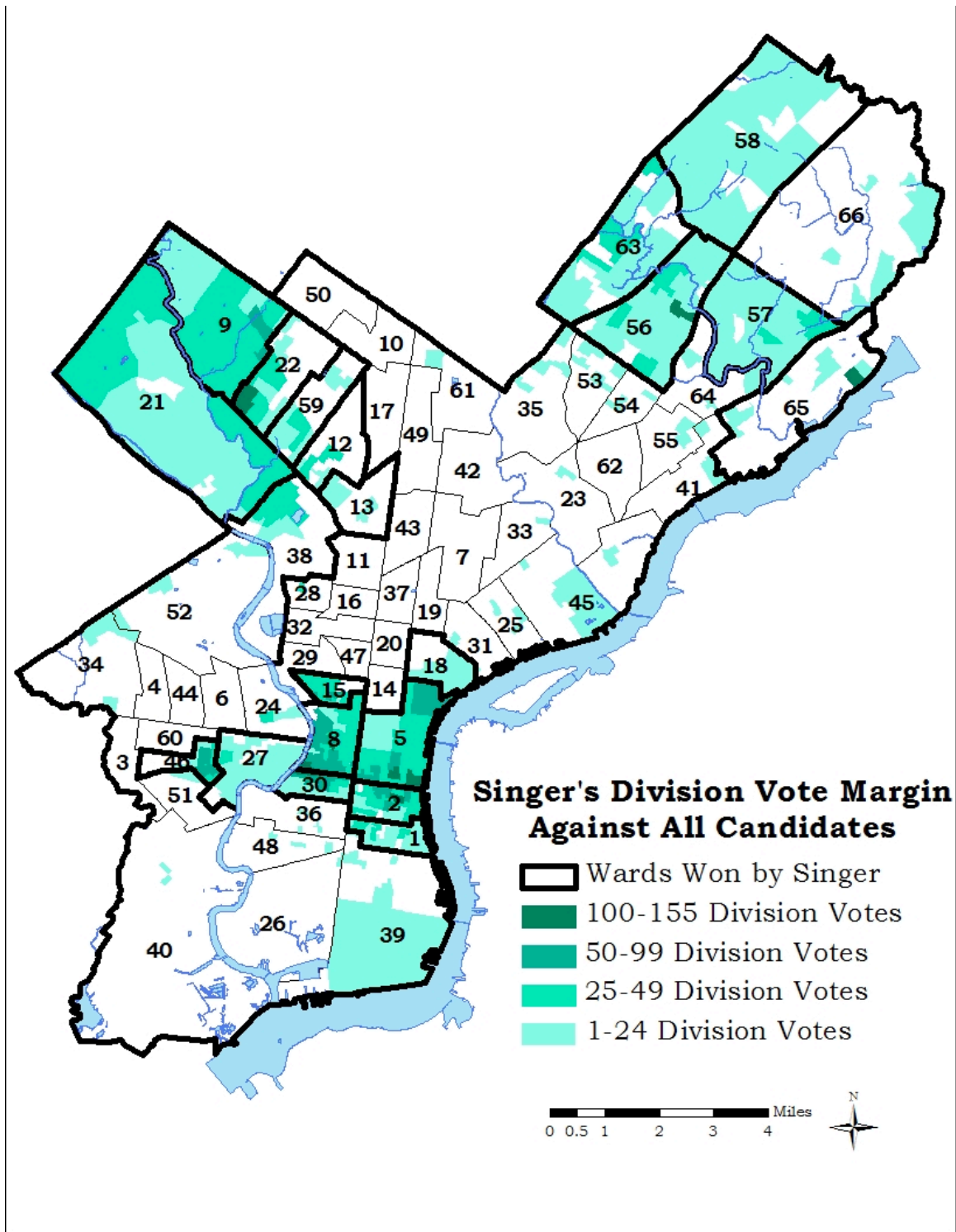


Figure 13 2011 City Commissioner results, by division

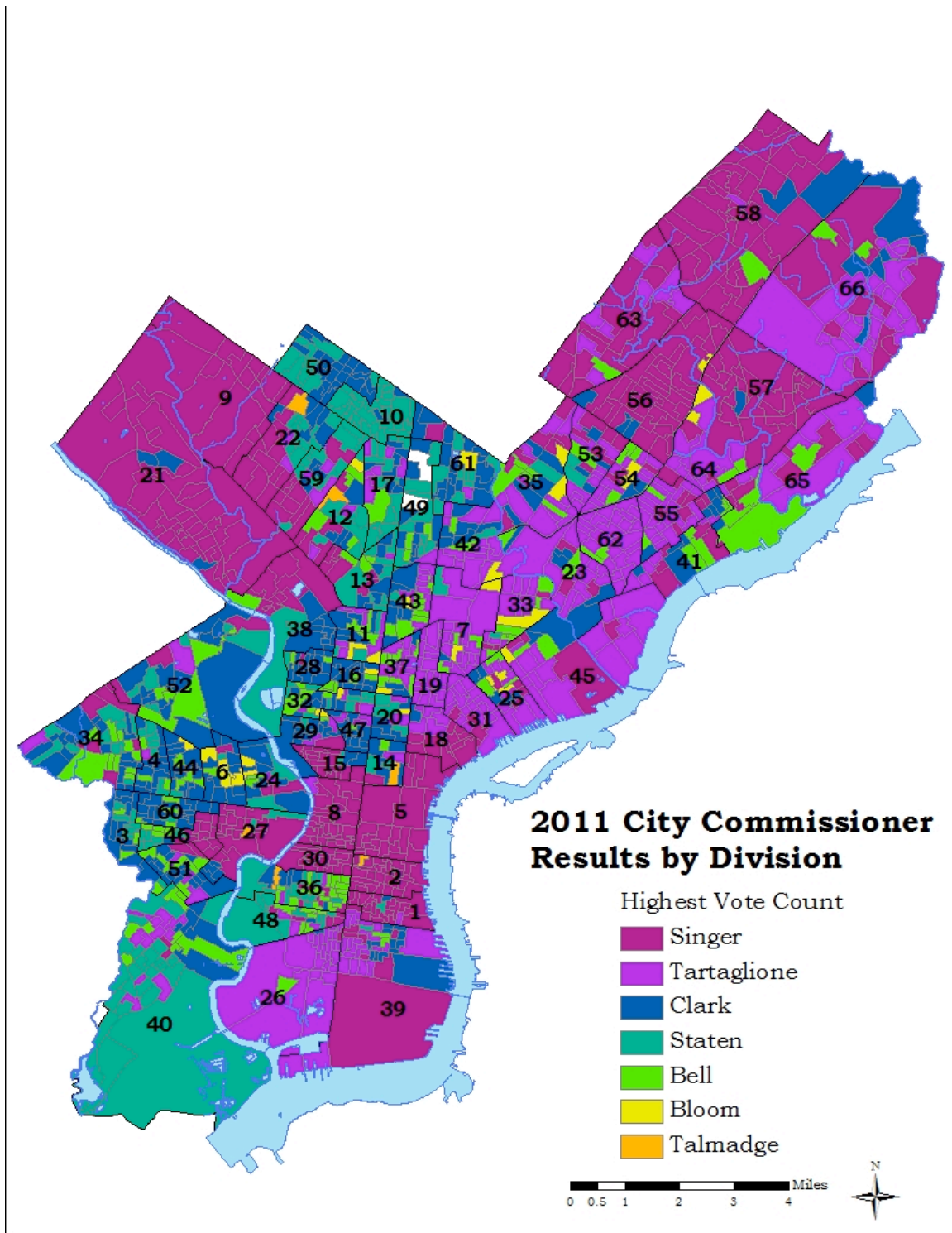


Figure 14 Tartaglione 2007 vote margins over Tartaglione 2011

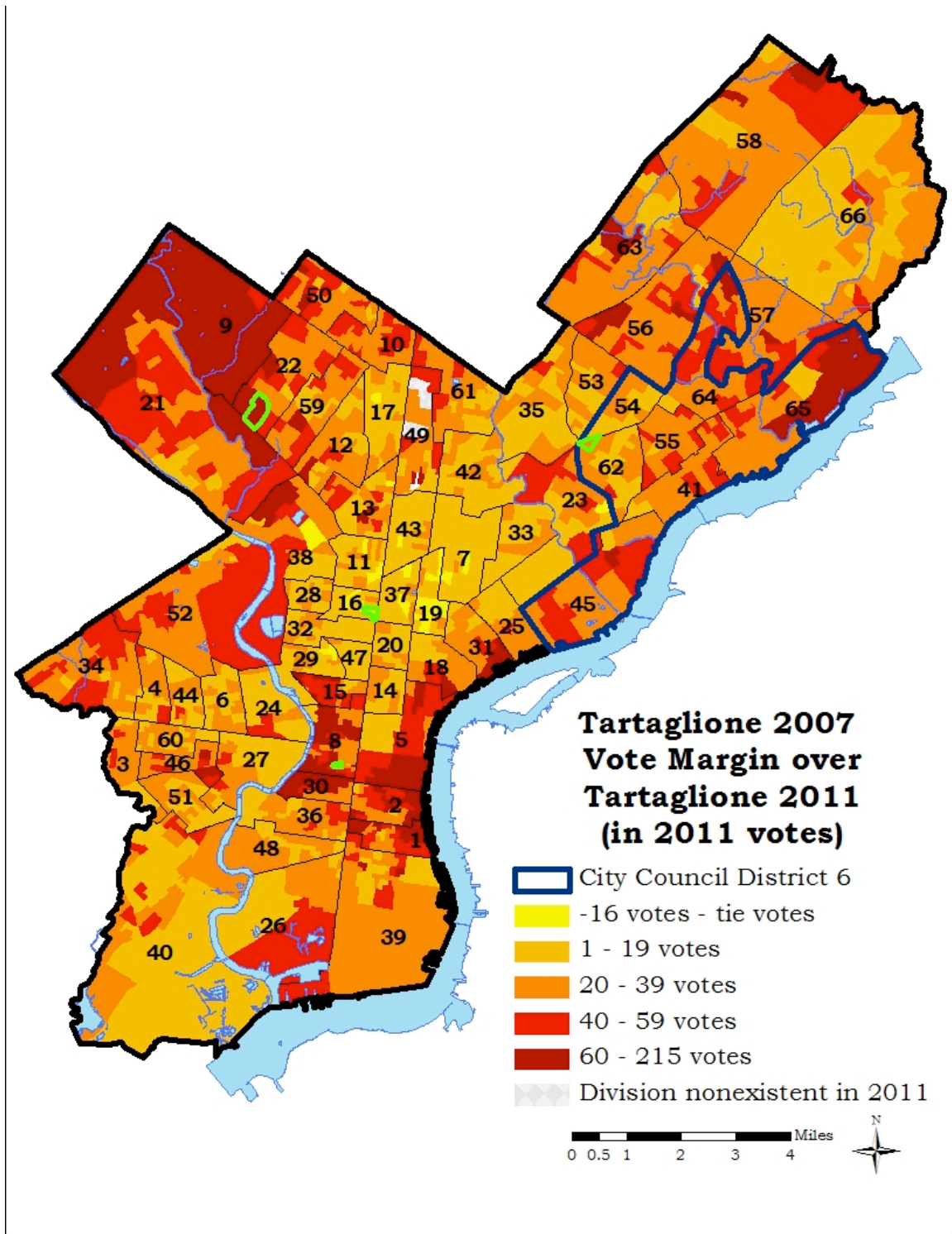


Figure 15 John Kromer, Candidate for Philadelphia Sheriff



Figure 16 Jewell Williams: Candidate for Philadelphia Sheriff



Photo Credit: pahouse.com

Figure 17 2011 Sheriff election results, by Ward

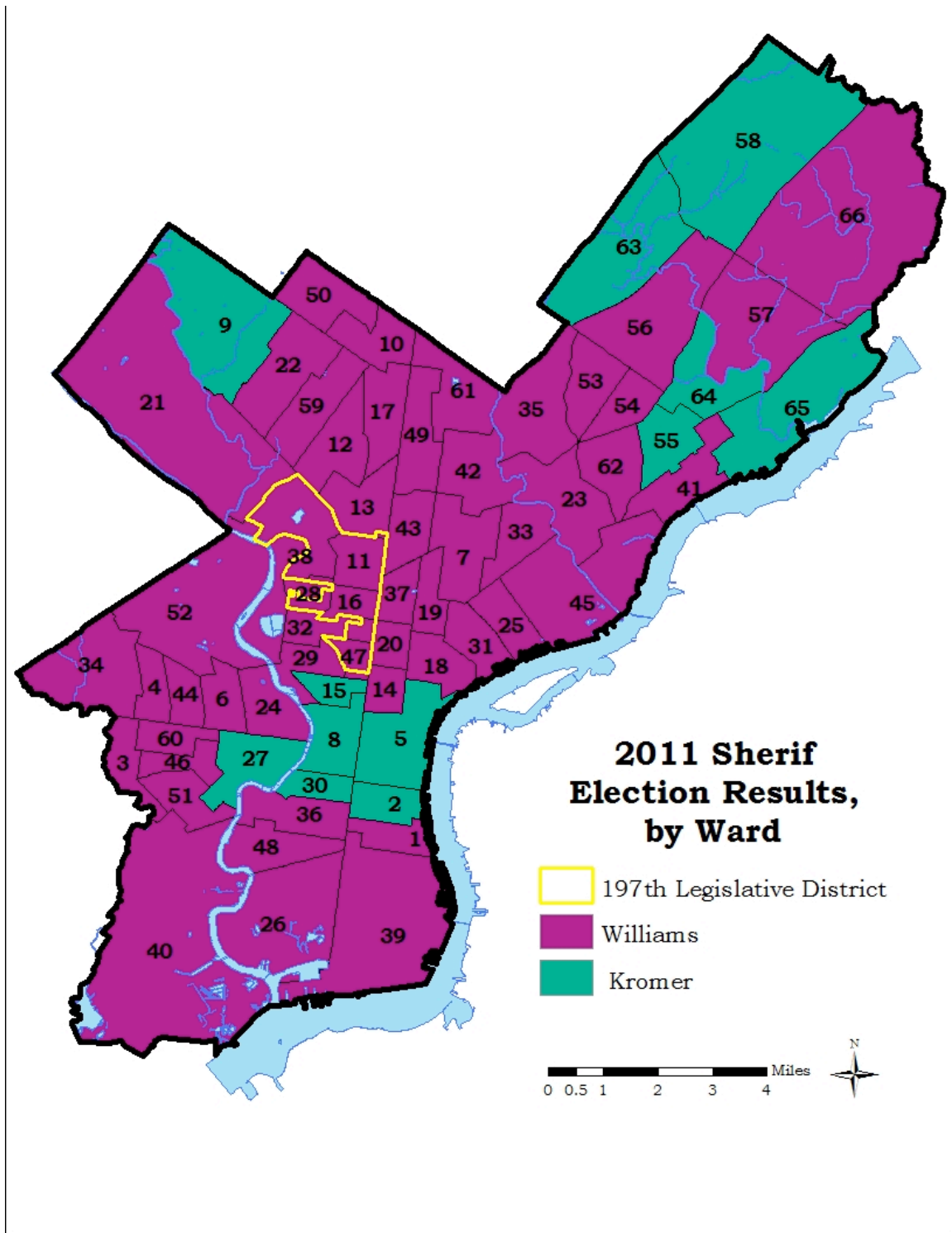


Figure 18 Combined Kromer/Whaumbush margins over Williams by division

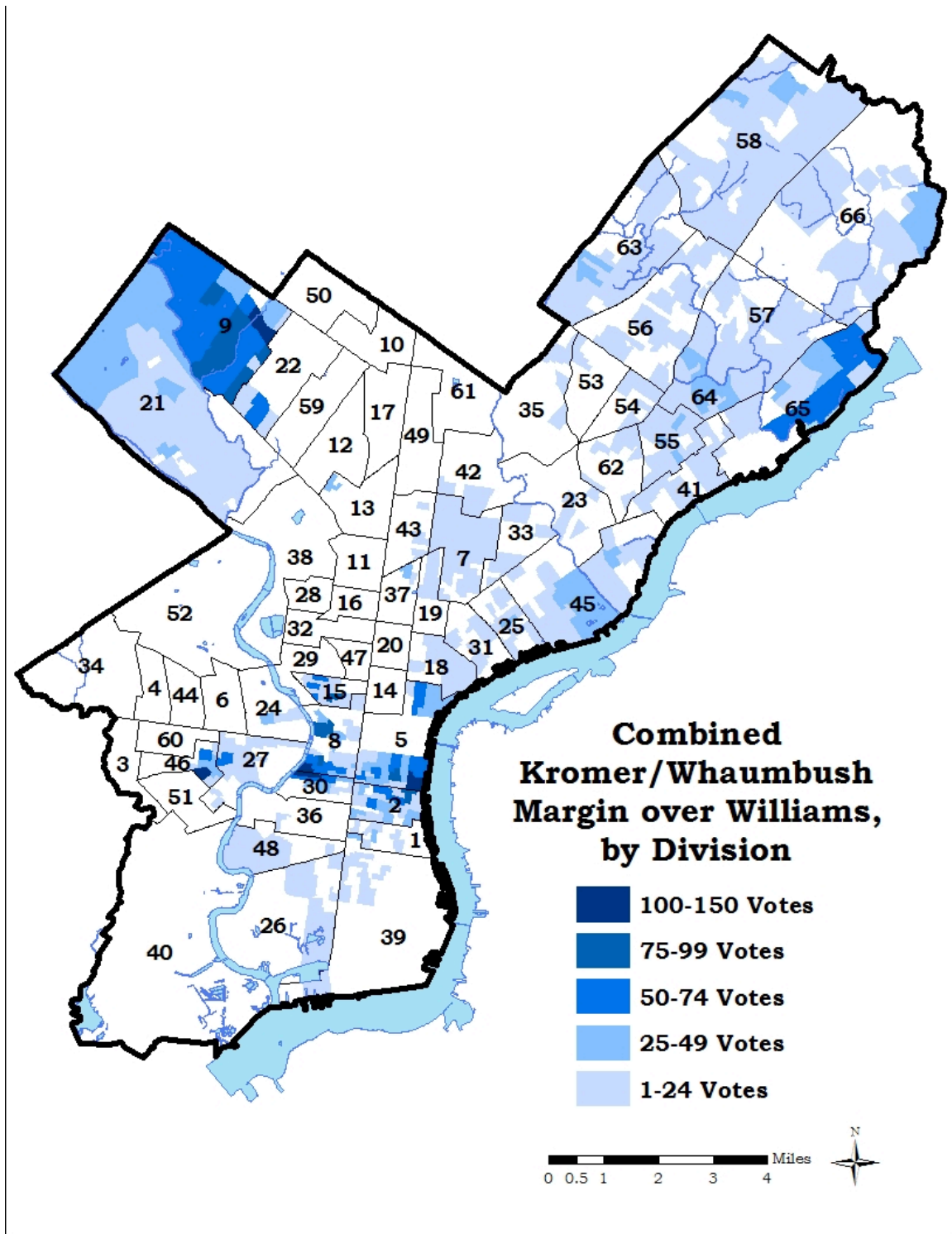


Figure 19 Wards won by Untermeyer in 2007 and Kromer in 2011

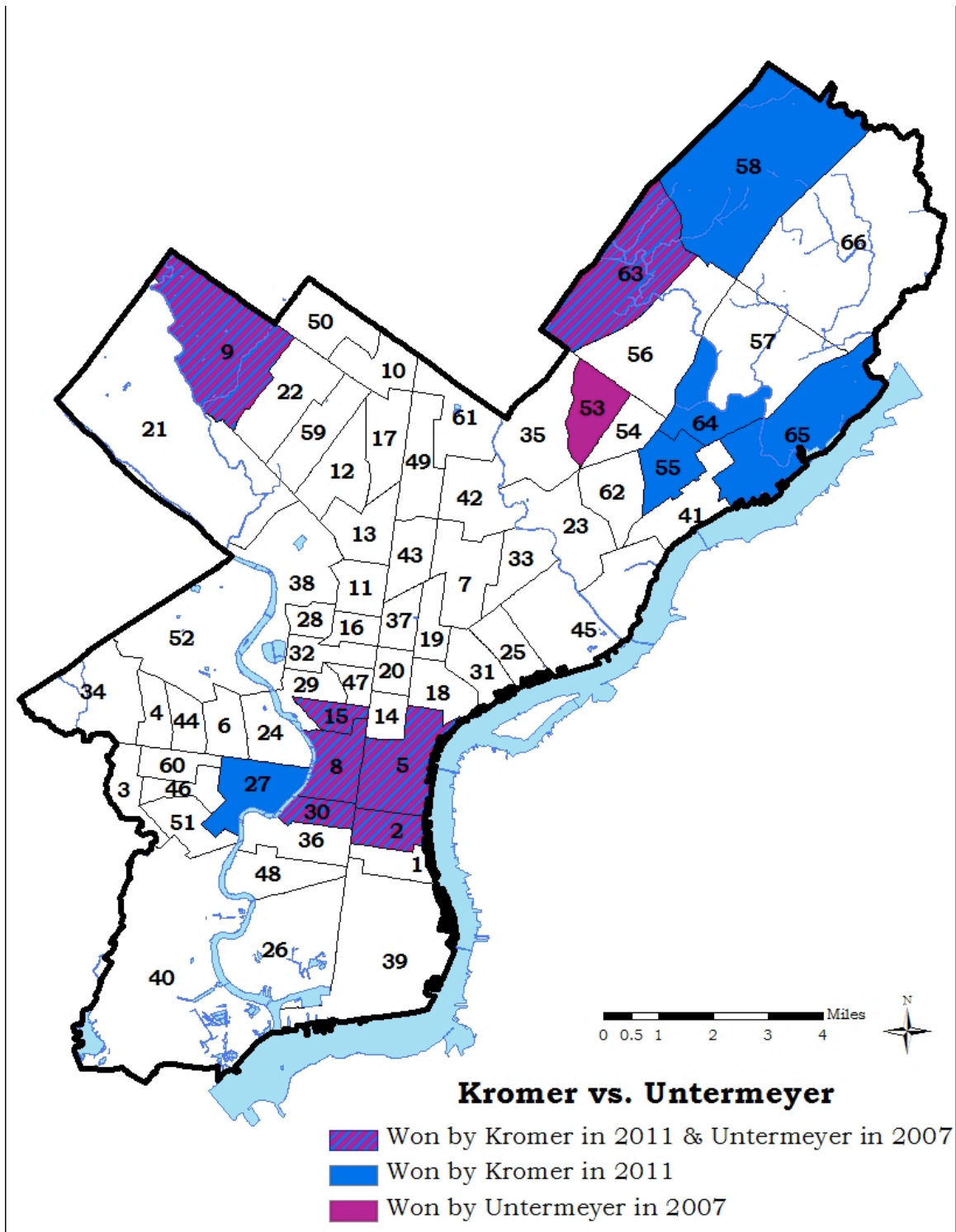


Figure 20 Kromer vs. Untermeyer by Ward (in 2011 votes)

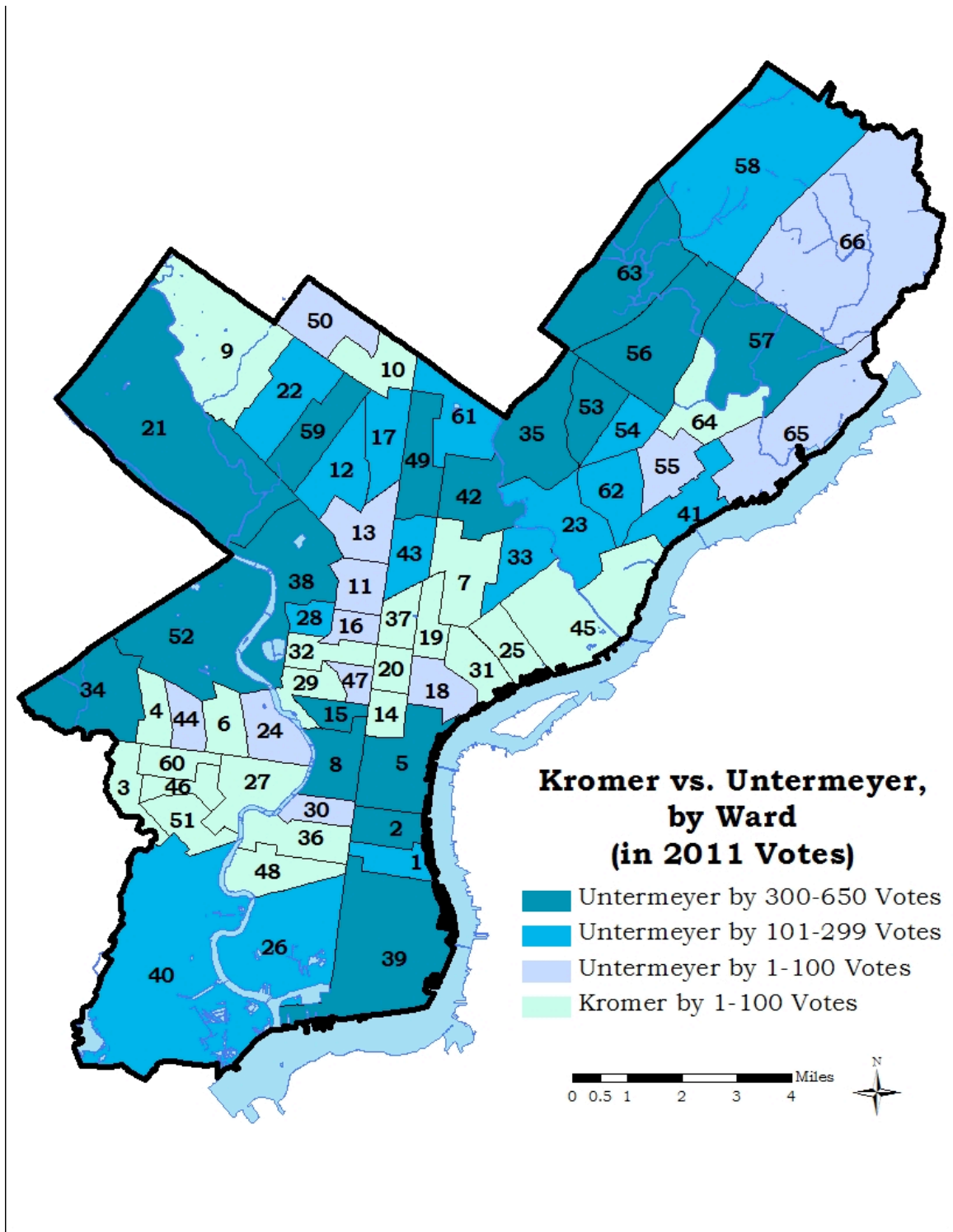


Figure 21 Brett Mandel: Candidate for Philadelphia Controller



Photo Credit: phillyledger.com

Figure 22 2009 Controller election results by Ward and division

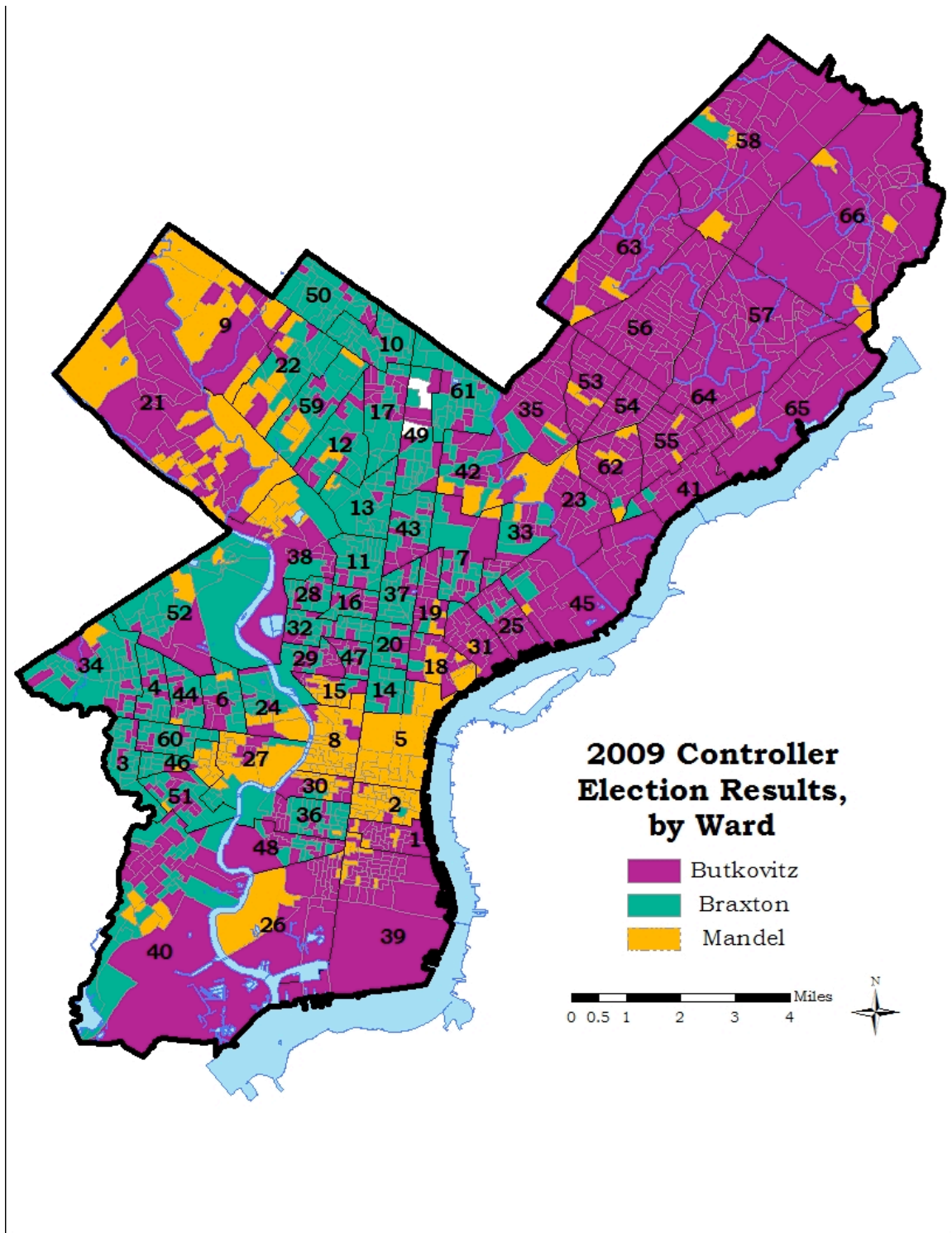


Figure 23 Combined Braxton and Mandel vote margin over Butkovitz, by division

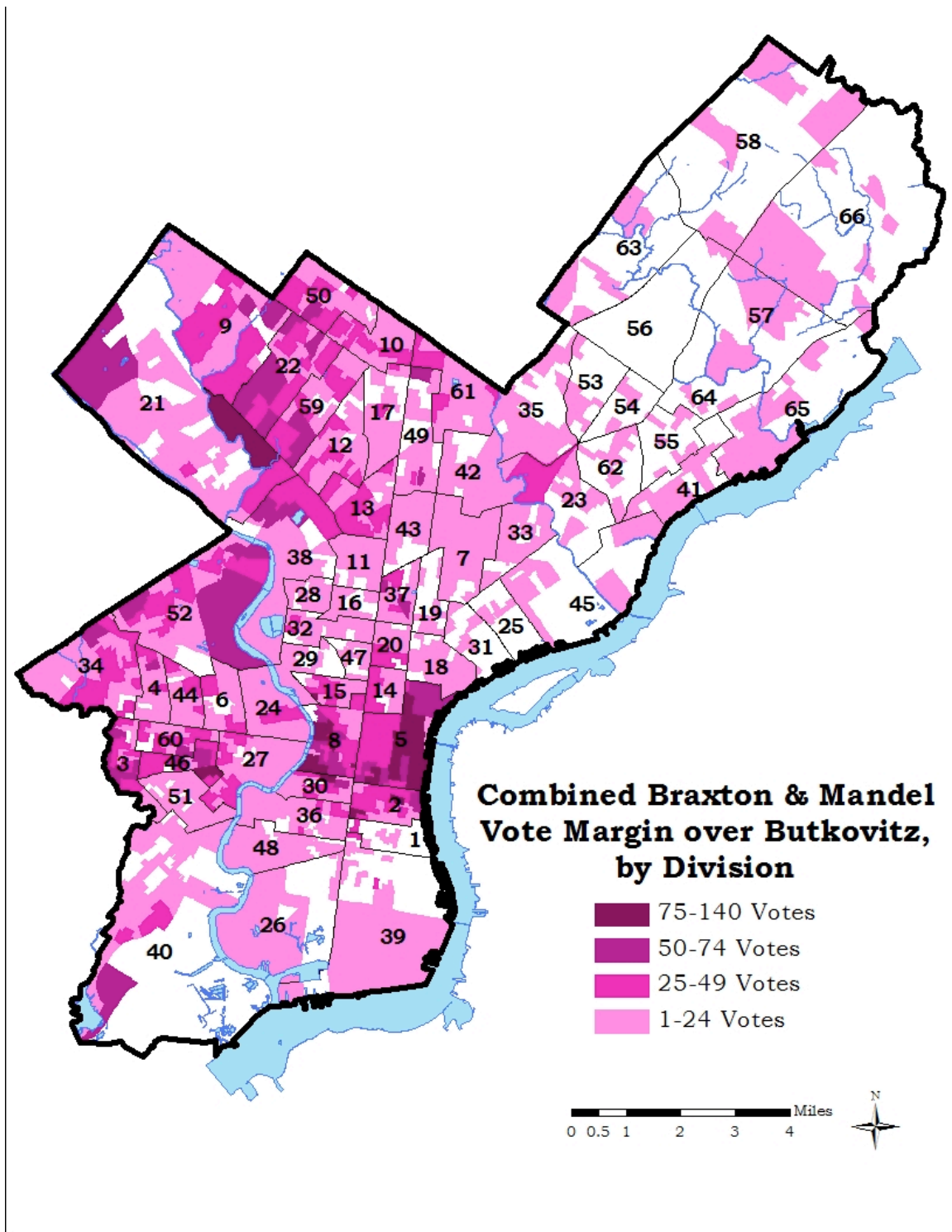


Figure 24 Anti-Tartaglione campaign mailer from Singer campaign



Photo Credit: dropmarge.com

Figure 25 "Last Sheriff" logo and video featured on local news blog

Philly Sheriff's race: The quirky campaign videos continue

...

Published: May 09, 2011 11:32 a.m.
Last modified: May 09, 2011 3:17 p.m.

Be the first to comment
Print article
Text size

John Kromer, the guy running for Philadelphia sheriff to abolish the office of Philadelphia sheriff, took an attention-grabbing cue from Republican mayoral candidate John Featherman with this little ditty called, "Ballad of the Last Sheriff," which hit the email inboxes Thursday night.



If this doesn't make you vote for him, what will?



More about politics

- ▶ Obama Pain by numbers
- ▶ Fox News: Tim Pawlenty "Definitely Not Gay"
- ▶ City Council race: Supermarket, inside politics dominate
- ▶ The rise of P.T. Trump

The guy who wants to eliminate the Sheriff's Office formally announces his campaign to be Sheriff [Metro]

Figure 26 "Budget Bulldog" logo and stuffed mascot



Photo Credit: archives.citypaper.net

Figure 27 Gentrifying Areas: Fishtown and Northern Liberties occupies portions of the 18th Ward and 5th Ward. East Passyunk occupies portions of 1st Ward and 39th Ward. Southwest Center city occupies the entire 30th Ward.

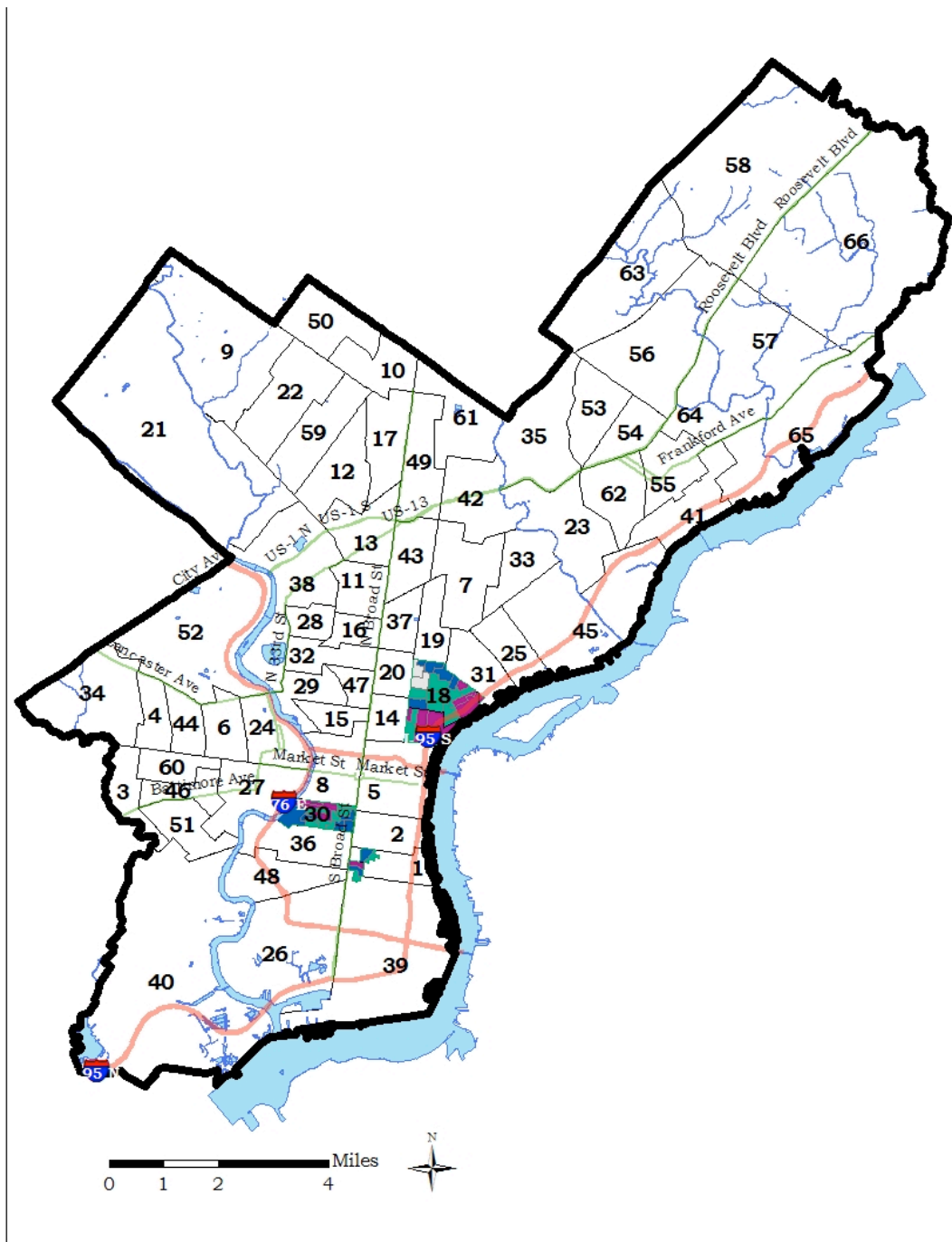


Figure 28 Gentrifying areas with division boundaries

